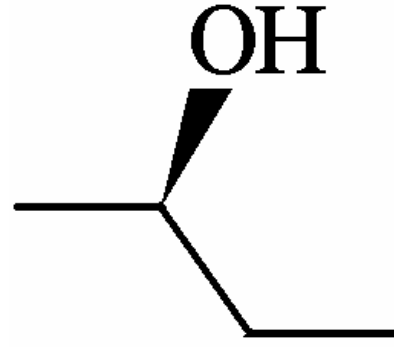
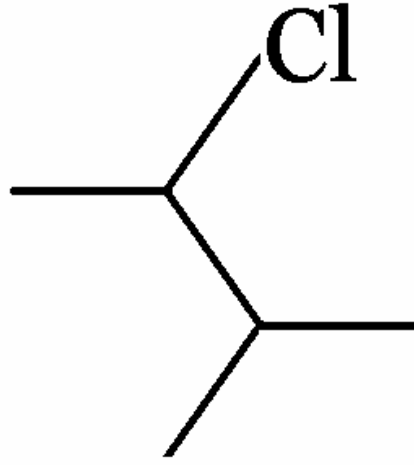


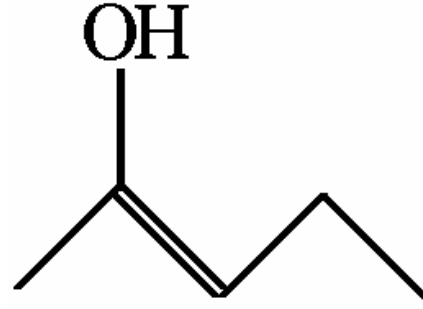
1-chloroéthanol



Butan-2-ol

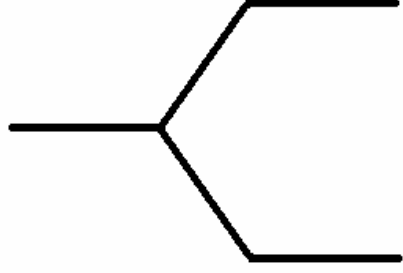


2-chloro-3-méthylbutane

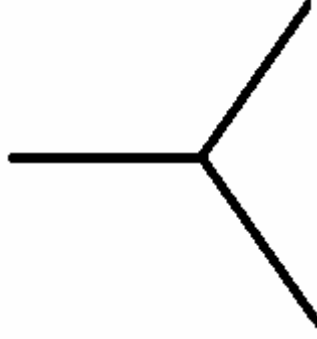


(Z)-pent-2-èn-2-ol

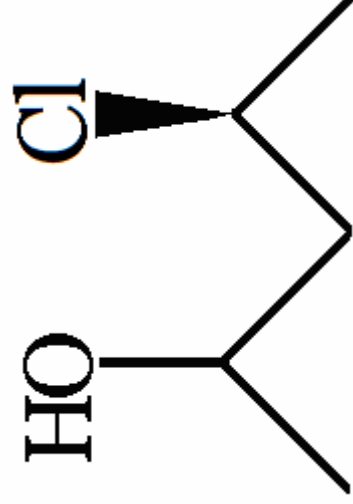
3-méthylpentane



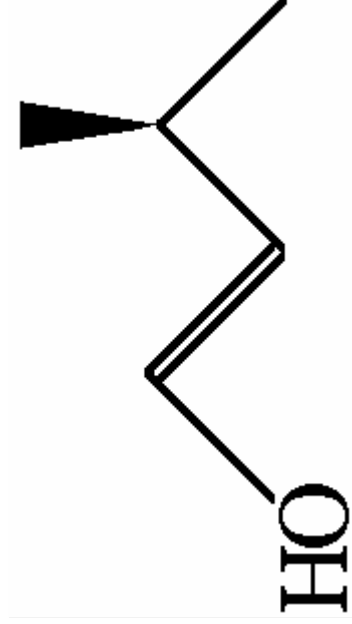
méthylpropane



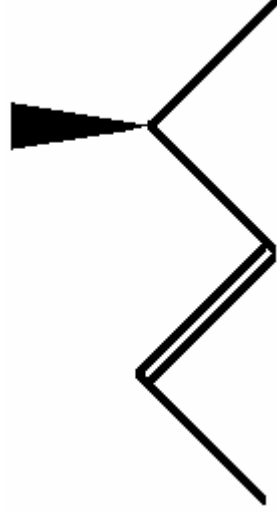
4-chloropentan-2-ol



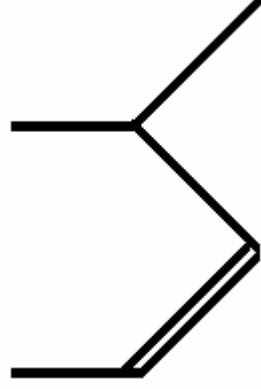
(E)-3-méthylbut-1-èn-1-ol



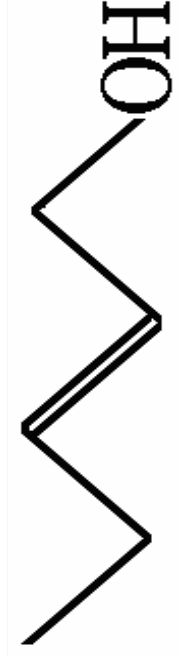
(E)-4-méthylpent-2-ène



(Z)-4-méthylpent-2-ène



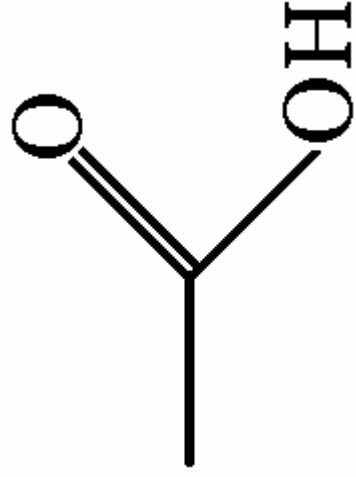
(E)-pent-2-èn-1-ol



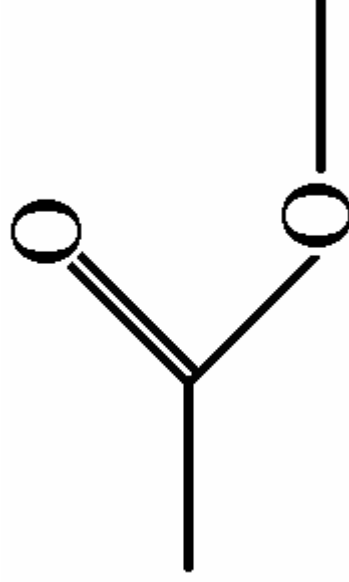
(E)-pent-2-ène



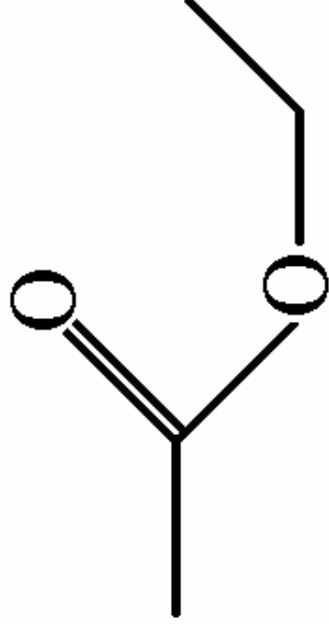
Acide éthanóïque



Ethanoate de méthyle



Ethanoate d'éthyle



Acide propanoïque

